

Mangawhai Beach School

# NEWSLETTER



Telephone: 09-431-4385, Email: [office@mangawhaibeach.school.nz](mailto:office@mangawhaibeach.school.nz)

Web: [www.mangawhaibeach.school.nz](http://www.mangawhaibeach.school.nz)

34 Insley Street, Mangawhai, 0505



## Principal's Soapbox

### Welcome back to school - Term 2!

I would like to start this term newsletter by showing gratitude - gratitude for all those who have stepped forward and supported their children's teachers on trips, in the classroom, and by following our school's processes. Without your support there is so much that cannot happen - with your support, we can ensure that the exciting plans we make to keep things 'interesting' for your children can go ahead. Also, I would like to say a huge thank you to those of you who have already committed to helping this term with events. We have a busy term ahead with exciting plans afoot from the Science Roadshow to an 'in school' Disco which is being trialled by FOMBS for Pink Shirt Day - our focus on AntiBullying! Please ensure you keep abreast of the fun events happening and add them to your diaries - grab a police vet from the office so you can help out in and out of school.



### We are a fully fenced school. We ask that you PLEASE close the gates behind you when you enter and leave the grounds.



We have some students who have very high needs and can run. Insley Street is now a very busy road and we need to ensure

these students are kept as safe as possible - we value your support in this matter.

**Groundworks** are underway, as you will remember we closed the school for the works to be prepared for the new astroturf.



There will be some disruption at the start of term while the turf is completed - it will be worth it! Another fab space for our students to play when the field gets boggy! We will also have four new portable classrooms arriving, potentially before the end of the term - I will keep you

in the loop as things progress. The school grounds will remain closed before and after school until further notice.



### IMPORTANT DATES:

- 1st May - Soccer coaching
- 3rd May - Soccer coaching
- 7th-9th May - Science Roadshow
- 8th May - FoMBS AGM 7pm (all welcome) school staffroom
- 8th May - Yr 7/8 Technology
- 10th May - Wellsford Sports Exchange
- 14th May - Writers festival
- 15th May - Yr 7/8 Technology
- 15th May - Rippa coaching
- 16th May - Class Nutrition for Seniors
- 17th May - Pink Shirt Day (anti bullying)
- 17th May - Pink Disco fundraiser
- 17th May - Class Nutrition for Seniors
- 17th May - Rippa coaching
- 20th May - BoT Meeting 6:30pm
- 20th May - PAT Testing week
- 20th May - Class Nutrition for Seniors
- 24th May - Junior Assembly 9:30am
- 7th Jun - TEACHER ONLY DAY**

Cont'd

We would like to welcome two Teacher Aides to our team for term two. Patricio is new to the team and Niki will be rejoining us - both to support students in the school environment.

We also welcome back Amy who is our New Entrant teacher in Room 7. Lovely to have you in our team.

As previously advised, Alice will be taking over teaching in Room 21 as Megan moves temporarily into the Learning Support role. Please join us in welcoming our new staff. Our Powhiri to welcome new staff and students will be held at 9:15am on the 7th of May 2024.



### DAILY TIMETABLE

8.55am-10:30am (Block 1)  
10:30am-11:00am (Interval)  
11:00am-12:30pm (Block 2)  
12:30pm-1:15pm (Lunch)  
1:15pm-2:45pm (Block 3)

### 2024 Term Dates:

1st Feb - 12th Apr  
29th Apr - 5th Jul  
22nd Jul - 27th Sep  
14th Oct - 18th Dec

### **Key Events in the first two weeks:**

- Co Theatre Group (all classes): Wild Feelings. A wonderful show that highlights environmental impacts alongside managing difficult feelings through the characters of Tui and Godwit.
- Northland Soccer (all classes): Soccer skills for all!
- The Science Roadshow (all classes): The Themes are: Energy — Te Pūngao / Materials — Ngā Matū / Measurement — Te Inenga / Spinning and whizzing — Te Porotiti me te pūrōrohū . All of these are supported by The Roadshow team via mini shows and our students 'Informers' at the interactive display stations.
- School-wide Whānau Hui - 15th Mei at 5pm. This will be held in Rooms 16 & 17 (Te Reo Hīnāture). This hui is open to ALL whānau Māori across our kura. We will be sharing current kaupapa within MBS and Hīnāture as well as discussing the topic of parent/whānau engagement. Nau mai, haere mai! We would love to hear your perspectives.
- Teacher Only Day (7th June). This day has been allocated by the Ministry of Education and our Kahui Ako to provide professional development in writing for our staff. Writing is our strategic goal for 2024/25, ensuring we meet the needs of our students.
- 

### **Upcoming BIG Events for T2 - we need your support!:**

- **Wellsford Sports Exchange** - we don't apologise for the fact we are in this to WIN! This competition goes wayyyyyy back and bringing the cup home is a very serious matter! That being said, the kids have immense fun at the same time. The teams are chosen by our sports coordinators and the teachers, they are the ones watching the children's practice and see the students who give us the best chance of success.
- **Pink Shirt Day** - This is an annual event aimed at raising children's awareness around the prevention of bullying in school and out! It is a mufti day when the students all wear pink, dress up and have FUN! The reasons for this day being so important are being heard nationwide in the news and via talk on the playground!
- **Pink Shirt Day Disco** - Get your best outfits out, it's time to boogie! To end the Pink Shirt Day festivities on Friday 17th May we'll be celebrating with a Pink-themed Disco fundraiser, run by FOMBS. Junior disco (Yr 0-4) from 5-6pm and Seniors (Yr 5-8) from 6.15-7.30pm. Gold coin koha. We'll have hotdogs, lolly bags, glow accessories and water for sale. If you can help out while your child is enjoying their session, and/or with set-up or pack-down please email [fombs@mangawhaibeach.school.nz](mailto:fombs@mangawhaibeach.school.nz).
- **Matariki Celebration** - On Tuesday 25th June we will host our school celebration for Matariki 2024. We will follow the same format as last year with a dawn gathering and intentions fire, followed by shared breakfasts in classes. More details will follow later in the term. We hope you will join us!

*Nga mihi nui*

*Whaea Emma, Whaea Sharee, and your Team Leaders, Rachel (Junior), Charli (Middle) Natalie (Senior)*

*Our Vision: Engaged and diverse learners connected to our community and values*

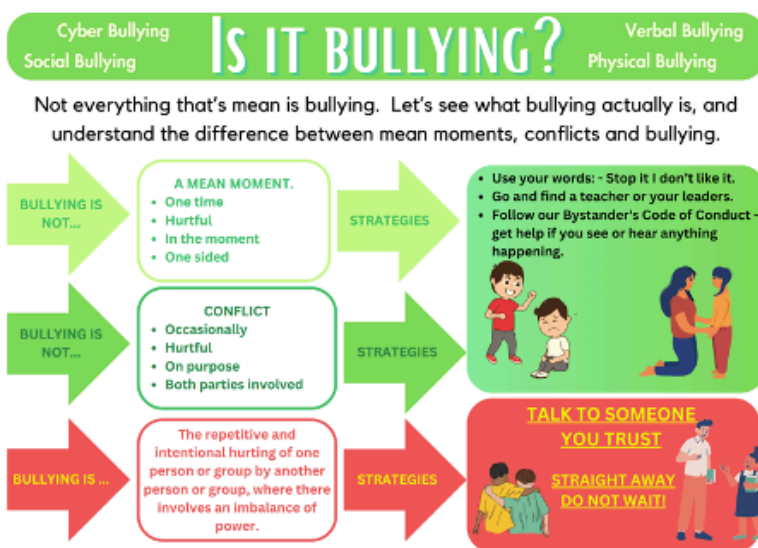
**TERM TWO CALENDAR:** Dates for events MAY change so please look out for updates

Diary Dates	Monday	Tuesday	Wednesday	Thursday	Friday
Week 1 29/04 to 04/04	1st DayT2		Theatre Group		Northland Soccer
Week 2 06/05 - 10/05		Vision and Hearing	Intermediate Tech Science Roadshow FOMBS Meeting	Science Roadshow	
Week 3 13/05 - 17/05			Intermediate Tech Rippa Coaching Whānau Hui		Pink Shirt Day Rippa Coaching Pink Disco
Week 4 20/05 - 25/05	Y4-6 PAT TESTING BoT Meeting	Y4-6 PAT TESTING	Y4-6 PAT TESTING Intermediate Tech Rippa Coaching	Y4-6 PAT TESTING	Y4-6 PAT TESTING Jun Assembly Middles Assembly
Week 5 27/05 - 31/05	Senior Nutrition visit	Senior Nutrition visit Middles Xcountry	Intermediate Tech		
Week 6 03/06 - 07/06			Intermediate Tech		TEACHER ONLY DAY - Writing PD
Week 7 10/6 - 14/06				Mind Over Manner Workshops	Junior XCountry Middles Assembly
Week 8 17/06 - 21/06					Y0-3 Drumming workshops
Week 9 24/06 - 28/06		Matariki Celebration			
Week 10 31/06 - 04/07					Y4/5 Art Exhibition

**Our MBS Bystanders Expectations**

When you walk into a scene where others are not being a part of our **CREW** you can be an active member of our **CREW** by...

<b>C</b> COURAGEOUS	Looking for ways to calm the situation down - be creative, try humour or be firm.
<b>R</b> RESPECTFUL	Saying "stop it, I don't like it" - standing up to your friends is so hard BUT WORTH IT!
<b>E</b> EMPOWERED	Gapping it! and telling a teacher, Peer Mediator or House Captain, don't allow yourself to become a part of the problem
<b>W</b> WITNESS	Showing respect by helping the student who is in need by taking them to their classroom, sick bay, friendship seat or a duty teacher.
The 'Code of Silence' must be broken.	
If we don't know what is happening we cannot help! It is your job to talk to us!	



Our Vision: Engaged and diverse learners connected to our community and values

**Attendance:** We are required by the Ministry of Education and our government to track attendance. We use specific codes to enable us to do this accurately, these are explained further down our newsletter. Our overall school attendance for Term 1 was quite eye-opening - **only 57%, just over half of our school, has acceptable attendance rates.** We will support parents whose children are in the orange and red zones. Please do contact us if you need support getting your child to school. [Here is an article](#) I wrote a few years ago that shares the Power of Attendance at School.



Present 0-70%	Present 71-80%	Present 81-90%	Present 91-100%	Late
3.05%	9.79%	29.7%	57.46%	1.27%

# ATTENDANCE CODE TREE

Note: School Closures

Is the student participating in some form of schooling?  
Please note Nature School is not considered schooling.

YES				NO				*																		
Is this schooling on the school site?				Is there an explanation that is within school policy?																						
YES		NO		YES		NO																				
Is the student in a regular scheduled class?		What type of off-site schooling are they attending?		What explanation has been supplied?		Explanation?																				
YES	NO																									
Late?	Reason for class absence?																									
On time, present	Late	In an exam / studying	In the sickbay	Internal appointment	School-based activity	Removed	School organised trip		Work experience	Secondary Tertiary Programme	Teen Parent Unit	Alternative Education	Activity Centre	Off-site Course	Health / Residential School	Justice proceedings	Medical Appointment	Illness / Medical Absence	Stood down / Suspended	Overseas posting	Exam leave	Justified (other)	Accepted (but unjustified)	Holiday	Unexplained / Trivial	Unknown (Temporary)
P	L	V	S	I	N	R	Q		W	Z	K	A	Y	F	H	C	D	M	U	O	X	J	E	G	T	?
Present for 1/2 day calculations																Justified Absence				Unjustified Absence						

Hover over codes for full description

Our Vision: Engaged and diverse learners connected to our community and values

**mind  
over  
manner.**

**REALISING THE POTENTIAL OF  
DIFFERENTLY WIRED MINDS**



**Mind Over Manner is coming to Mangawhai  
to deliver a free  
Neurodiversity Workshop  
for community (not suitable for children)**

Our workshops use the power of theatre to introduce participants to an alternative way of understanding so many young people . Takiwatanga - those who live in their own space and time

Mind Over Manner provides education about those who sense and learn differently. Our experienced team of actors show how a young person's sensory perception and cognitive relationship to the world can often result in rude, shutdown or confused behaviour.

We will bring a number of charged scenarios to life, then work with you, our participants, to unpack, bring our collective learnings and re-evaluate our responses to the difficult situations that often arise.

These workshops are relevant to all people who live alongside or work with young people who have behavioural, sensory, and learning differences. We encourage whanau, professionals, and ALL members of the community to engage in these eye-opening and intriguing workshops.

*"It is the most powerful, emotionally charged and practical professional learning I have ever experienced."  
Parent/Teacher*

Content : Sensory Over Responders may be hypersensitive to touch and sound, be on high alert, and become easily distressed and struggle to calm down. Often labeled as Autism, OCD, Anxiety Disorders and others.

Sensory Seekers are highly energetic individuals who often appear oppositional, sassy, and overly confident - but they too get overwhelmed and experience high anxiety. Often diagnosed (or not) as ADHD , Dyslexic Oppositional Defiant Disorder or FASD

Sensory Under Responders - dont smell the toast burning and are difficult to wake up . Diagnosed ADD

When: Wednesday 12th June 2024. Time : 6.30 - 9 pm Where: Mangawhai Beach School Hall

If you would like to register please contact  
<https://www.eventbrite.co.nz/e/883862716177?aff=oddtcreator>

**Thank you to Te Whai Community Trust  
for making this event possible**

For more information please visit  
[www.mindovermanner.co.nz](http://www.mindovermanner.co.nz)



Our Vision: Engaged and diverse learners connected to our community and values

# COMMUNITY NOTICES

## Mangawhai Community Park Master Plan review

In 2023, we asked for your feedback on the draft Master Plan for Mangawhai Community Park. We received over 100 pieces of feedback and have now prepared a new Master Plan.

### Have we got it right? Are we missing anything?

We'd like feedback from the community on whether we have this Draft Master Plan right or if changes are needed before it is adopted for implementation.

Provide your feedback online or drop by the KDC office for a feedback form before 5 May 2024.



[www.kaipara.govt.nz](http://www.kaipara.govt.nz)



OSCAR approved  
**Ka Pai Butterfly**   
BEFORE/AFTER SCHOOL, AND HOLIDAY PROGRAMMES.

**Location:** At MBS, upstairs in recreation centre.  
**Availability:** Every school day.

**AFTERNOON TEA, HOMEWORK COMPLETED,  
THEN ACTIVITIES &/OR FREE PLAY.**

For further information please contact Anita on  
021 330 191 or at [anita@royalgoverness.com](mailto:anita@royalgoverness.com)



Our Vision: Engaged and diverse learners connected to our community and values

# PLEASE SUPPORT OUR SPONSORS

**WATER**  
  
**MANGAWHAI**  
 Well Drilling & Water

Quality Assured  
**431-5571**  
**027 287-0922**

*Miniwhais*  
  
  
**EARLY LEARNING & CARE CENTRE**  
**09 - 431 4747**

 **MC | PLUMBING & GASFITTING**  
 NEW BUILDS, RENOVATIONS & MAINTENANCE

MANGAWHAI & SURROUNDING AREAS

**MIKE CUFF**  
 CERTIFIED PLUMBER & GASFITTER

**021 032 5199**

**MCPLUMBINGNZ@GMAIL.COM**

FRESH BAKED BREAD DAILY  
 HOT COOKED CHICKENS  
 FRESH PRODUCE AND LOTS MORE!  
 CALL IN TO SEE OUR FRIENDLY TEAM FOR ALL YOUR SHOPPING NEEDS!  
**OPEN 7 DAYS - 7AM TO 8PM**  
 3 WOOD STREET, MANGAWHAI HEADS  
 09 431 4654

**4**  
**FOUR SQUARE**  
 MANGAWHAI HEADS

 **computersplus**  
 Technical Support • Sales • Advice

- Business Services
- Computer Sales
- Remote and Onsite Support
- Repairs
- Virus/Malware Removal

**09 431 4393**  
 Open 9.30am to 4.30pm weekdays  
 218 Moleworth Dve, Mangawhai  
 support@computersplus.net.nz  
 www.computersplus.net.nz

**AARON I TODDUN** B/Com, Dip/Com Law  
**CHARTERED ACCOUNTANT**  
 1 Awatea Street, Mangawhai Heads 0505  
 PO Box 401069, Mangawhai Heads 0541  
 Ph & Fax: (09) 431 4881  
 A/hrs: (09) 431 5001  
 Mobile: 027 611 0616  
 Email: ai.toddun@extra.co.nz

**CHARTERED ACCOUNTANT**  
 Member of the Institute of Chartered Accountants of New Zealand

 **CRETEPRO**  
 CONCRETE PUMPING

Boom Pump Hire  
 10 / 13 / 19mm Aggregate  
 Footings / Foundations  
 Driveways  
 Blockfill / Grout

**Ants Beard**  
**027 722 7848**

**www.cretepro.co.nz**

I will make the difference

  
**Mike Hutton**  
 Residential/Rural Sales  
 021 587 232  
 m.hutton@barfoot.co.nz

**BARFOOT THOMPSON &**

  
**C.R. JOHNSON LTD**  
**PHONE: 022 007 6234**  
 HOUSE SITES • DRIVEWAYS • FOUNDATIONS  
 SECTION CLEARING • GENERAL CONTRACTING

  
**NORTHGLASS**  
**Broken Glass**  
**431-4999**  
 Servicing Mangawhai since 2006

**MBL**  
**MANGAWHAI BOBCATS LTD**  
 TRAVIS COLLIN  
**0 2 1 7 1 1 7 7 5**  
 trav@mangawhaibobcats.co.nz

  
**3D DESIGN**  
 Jonathan Zyzalo  
**027 590 7564**

**3D Printers & 3D Scanners**  
**3D Printing Services**

NEW ZEALAND'S MOST ADVANCED 3D SOLUTIONS PROVIDER

HAZARDWARE | SOFTWARE | MATERIALS  
 DESIGN | PROTOTYPING | MANUFACTURE  
**www.3dinnovation.co.nz**  
 info@3dinnovation.co.nz

Living local and selling local

Te Arai | Tomarata | Tern Point  
 Hakaru | Kaiwaka | Mangawhai  
 Mangawhai Heads | Maungaturoto  
 Langs Beach | Waipu Cove | Waipu

198 Moleworth Drive  
 09 431 5415  
 mangawhai@bayleys.co.nz

**BAYLEYS**

THE ULTIMATE SOLUTION FOR ALL YOUR OFFICE NEEDS.

**RAKI**

**Office Furniture**

www.rakioffice.nz | 09 392 2271 | info@rakioffice.nz

**AUTO SUPER SHOPPE MANGAWHAI**  
  
 Your Locally Owned & Operated  
 Automotive & Marine  
 Experts  
**09 431 4814**  
 194 Moleworth Drive  
 mangawhairmarine.co.nz  
 supershoppermangawhai.co.nz

**MANGAWHAI MARINE**  
 BOAT & ENGINE SERVICES • BOAT SALES  


**MIDWAY CRANES AND TRUCKS LTD**  **MANGAWHAI ENGINEERING AND MARINE LTD**

STRUCTURAL STEEL FABRICATION  
 ONSITE WELDING & INSTALLATION  
 CONTAINER PURCHASES & STORAGE  
 HI-AB CRANE HIRE

115 BLACK SWAMP ROAD, MANGAWHAI, 0975  
 EMAIL: info@wehbl.co.nz | info@midwaycranes.co.nz  
 PH: 09 423 1100  
 www.mangawhaicraneengineeringandmarineblf.co.nz

**RAKI**

**Storage Solutions**

BESPOKE KITCHENS - WARDROBES - STORAGE  
 Call us today for a free no obligation quote | 09 392 2271

Our Vision: Engaged and diverse learners connected to our community and values